

The Pacific Northwest Chapter of the
American Society of Indexers

presents:

2009 Fall Meeting

Friday-Saturday, September 25-26, 2009
Kennewick and Richland, Washington

featuring a tour by the



Agenda

This year, our fall meeting kicks off with a car tour of Ice Age flood features and local wineries within 20 miles of Richland, Washington, led by George Last, President of the Lake Lewis Chapter of The Ice Age Floods Institute and member of the Applied Geology and Geochemistry Group, Pacific Northwest National Lab.

On Saturday, we will meet at the Richland Community Center. Sunday's board meeting is open to everyone, and will be held at the Guest House at the Pacific Northwest National Laboratories (PNNL).

Friday, September 25

1-5 p.m. Ice Age Floods Car Tour
Meet at the Richland Community Center, 500 Amon Park Drive

Nine stops are identified where evidence of these cataclysmic floods can be observed first hand and includes a hike up Badger Mountain. The tour also provides background information on the origin and destructive power of the Ice Age floods as well as their impact on the terroir of Washington's primary wine producing regions.

During the most recent episode of major ice-sheet expansion, between about 18,000 and 13,000 years ago, a lobe of the Cordilleran ice sheet advanced into the Idaho Panhandle blocking the Clark Fork River drainage and causing Glacial Lake Missoula to form. The lake was deeper than 2,000 feet deep at the dam and held over 500 cubic miles of water-as much as Lake Erie and Lake Ontario combined. The ice dam, however, was subject to repeated failure.



When the dam broke, a towering mass of water and ice was released and swept across parts of Idaho, Washington, and Oregon on its way to the ocean. The peak rate of flow was ten times the combined flow of all the rivers of the world. The huge lake may have emptied in as little as two or three days. Over a period of years the glacier would advance, once again blocking the river, and the dam and the lake would form again. This process was repeated scores of times, until the ice sheet ceased its advance and receded to the north at the end of the Ice Age.

Vice President of our Chapter, Nancy Gerth, has indexed two books about the Ice Age Floods and is working on a third.

If you can drive your car for this tour, please indicate how many people you can accommodate on the registration form on the last page of this packet.

6 p.m. Dinner at the Atomic Ale Brewpub & Eatery (cost not included in registration)

Saturday, September 26

10:00 a.m. Registration (Coffee, tea, and a light snack will be served.)

10:30 a.m. Welcome and introductions, business meeting, and volunteer recognitions

11:15 a.m. Break

11:30 a.m. Cataloging Rules and Tools for Indexers
Debra Spidal

Have you ever wondered what AACR2 is? A frequently cited source for solving personal name problems, it stands for Anglo-American Cataloging Rules (second edition), but how are cataloging rules relevant to indexing? This session will provide an overview of AACR2 highlighting the most important chapters for indexers. To throw in a few more cataloging acronyms, we will also look at several online cataloging tools, including the LCNAF and VIAF.

Debra Spidal is a cataloging librarian and indexer at Washington State University in Pullman.

Saturday, September 26 (continued)

12:30 p.m. Lunch (catered onsite)

2 p.m. **What Kind of Kholrabi Are You?**
Scott Smiley

This short workshop will explore some of the differences among us, our “indexing personality style” if you will, and how we can talk across the boundaries to other types. Let’s have a little fun with it!

Scott Smiley has been a freelance, back-of-the-book indexer for and ASI member for ten years; he has been an active member of the PNW/ASI for seven years, recently serving two terms as chapter treasurer. Scott facilitates the Portland Peer Review group and recently joined the faculty of The Graduate School (formerly USDA) as an instructor for the Basic Indexing course.



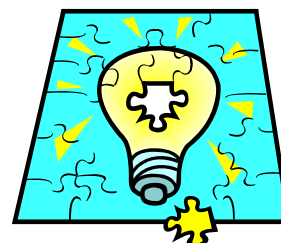
Little-known fact: With a long-standing interest in ways of knowing, including the poetic, Scott is a published poet.

3 p.m. Break

3:15 p.m. **Indexing Problems: Share Your Approach**
Sherry Smith

This session will be a large group discussion of the strategies we use for solving recurring indexing problems. We will cover as many of these topics as possible and add more if there is time:

- using “and” in subheadings
- deciding which names go in the index
- handling keyword repetition
- force sorting, why and how
- titles, when to ignore Chicago
- field guides, special considerations for this audience
- best software tricks



Sherry Smith, a freelance professional indexer for over 12 years, specializes in scholarly books with subjects as diverse as agriculture, Texas history, quantum physics, and baseball.

During her indexing career, she has served the American Society for Indexing (ASI) at the regional and national level. In the Pacific Northwest Chapter of ASI, Sherry has been an officer and continues to coordinate several of the chapter's committees. At the national level, she has served on the Wilson Award Committee, written articles for *KeyWords*, and contributed to a forthcoming book on how to index names.

4:45 p.m. Closing remarks/wrap-up

6:30 p.m. **Dinner at Anthony's Home Port on the Columbia River**
(cost not included in registration)

Sunday, September 27

8:30 a.m. Board meeting

We will gather in one of the common areas at the PNNL Guest House. More details will be provided at the chapter meeting on Saturday, September 26. Everyone is welcome to attend.

Environmental Issues

Because a number of chapter members have medically-diagnosed chemical allergies, PNW/ASI meeting sites have been declared fragrance-free zones. We request that attendees avoid using scented products, such as perfumes, colognes, shaving lotions, hair spray, hand and body lotion, or soaps on the day of the meeting. All meeting rooms are, of course, smoke-free.

Directions

For directions to/from various points related to our chapter meeting, see the other sites in this section. We've included every possible combination of directions we envision you'll need throughout your weekend in the Tri-Cities!

Pacific Northwest National Laboratory (PNNL) Guest House, 620 Battelle Boulevard in Richland

For a map to the Guest House, go to <http://www.pnl.gov/guesthouse/> and click the "Maps" link on the left.

Directions to the Guest House from I-82 East or West:

- Take exit 102 to merge onto I-182 E/US-12 E toward Richland/Pasco.
- Drive 4.9 miles. Take exit 4 toward Vantage/WellsIsan Way/WA-240.
- Drive 0.6 miles and merge onto By Pass Hwy.
- Drive 4.1 miles; turn right at Coast Street.
- Drive 0.1 mile; turn left at Stevens Drive.
- Drive 2.5 miles; turn right at Battelle Blvd. The Guest House will be on the left.



Richland Community Center, 500 Amon Park Drive in Richland

(gathering place for Ice Age Tour on Friday, September 25, and chapter meeting on Saturday, September 26)

From the Richland Community Center to the PNNL Guest House:

- When exiting the community center, follow Amon Park Drive to Bradley Blvd. Turn right on Bradley Blvd.
- Take the next right at George Washington Way.
- Drive 1.6 miles; turn left at Van Giesen Street.
- Drive 0.3 mile; turn right at Jadwin Avenue. In 0.7 mile, Jadwin turns into Stevens Drive. Continue following Stevens Drive for 2.8 miles.
- Turn right on Battelle Blvd. The PNNL Guest House will be on the left.

From the PNNL Guest House to the Richland Community Center:

- From the Guest House, turn left on Stevens Drive. In 2.8 miles, Stevens Drive will turn into Jadwin Avenue. Continue for 0.7 mile and turn left at Van Giesen Street.
- Drive 0.3 mile; turn right at George Washington Way.
- Drive 1.6 miles; turn left at Bradley Blvd. The entrance to the community center, Amon Park Drive, will be on the right.

The Atomic Ale Brewpub & Eatery, 1015 Lee Blvd. in Richland

(for dinner on Friday, September 25, after the Ice Age Tour)

From the Richland Community Center to the Atomic Ale Brewpub & Eatery:

- When exiting the community center, follow Amon Park Drive to Bradley Blvd. Turn right on Bradley Blvd.
- Take the next right at George Washington Way.
- Drive 0.3 mile; turn left at Lee Blvd. In about 100 feet at The Parkway, take the second exit to stay on Lee Blvd. The Atomic Ale Brewpub & Eatery will be 0.2 mile away on the left.

From the Atomic Ale Brewpub & Eatery to the PNNL Guest House:

- Turn right on Lee Blvd.
- Drive 0.1 mile and turn left on Jadwin Avenue. In 2.1 miles, Jadwin Avenue turns into Stevens Drive. Continue on Stevens Drive for 2.8 miles and turn right on Battelle Blvd. The Guest House will be 0.3 mile away on the left.

Anthony's at Columbia Point, 550 Columbia Point Drive in Richland
(for dinner on Saturday, September 26, after our chapter meeting)

From the Richland Community Center:

- When exiting the community center, follow Amon Park Drive to Bradley Blvd. Turn left on Bradley Blvd.
- Drive 0.9 mile; then turn left at Columbia Point Drive. Anthony's is 0.5 mile away on the left.

From Anthony's to the PNNL Guest House:

- Turn right on Columbia Point Drive.
- Drive 0.5 mile; turn right on Bradley Blvd.
- Drive 1 mile; turn right at George Washington Way.
- Drive 1.6 miles; turn left at Van Giesen Street.
- Drive 0.3 mile; turn right at Jadwin Avenue. In 0.7 mile, Jadwin turns into Stevens Drive. Continue following Stevens Drive for 2.8 miles.
- Turn right on Battelle Blvd. The PNNL Guest House will be on the left.

Lodging

PNW/ASI has reserved a block of rooms at The Guest House at the Pacific Northwest National Laboratory (PNNL) at 620 Battelle Boulevard in Richland (<http://www.pnl.gov/guesthouse/>). Rates range from \$35-80/night. Reservations can be made by calling (509) 943-0400 or online at <http://pnnl.oscarportal.net/booking.aspx>.



Convenient hotels in the Tri-Cities are listed below.

More hotel options are available at <http://www.visittri-cities.com/>.

Red Lion Richland
802 George Washington Way
Richland, WA 99352
(509) 946-7611 or (800) Red-Lion
<http://redlion.rdl.com/HotelLocator/HotelOverview.aspx?metalD=40/>

Days Inn
615 Jadwin Ave. Richland, WA 99352
(509) 943-4611
<http://www.daysinn.com/>

Hampton Inn
486 Bradley Blvd.
Richland, WA 99352
(509) 943-4400
http://hamptoninn1.hilton.com/en_US/hp/index.do

Shilo Inn Rivershore
50 Comstock Street
Richland, WA 99352
(509) 946-4661
<http://www.shiloinns.com>

Registration Form

Yes, I plan to attend the PNW/ASI 2009 Fall Meeting!

My check or money order (in U.S. dollars) is enclosed for (select one):

Early Bird registration (received by September 18): *Regular* registration (received after September 18):
 \$95 for ASI and ISC members \$125 for ASI and ISC members
 \$125 for non-members \$155 for non-members

Is this your first PNW/ASI meeting? If it is, you can register at a special \$70 rate. To take advantage of this discount, your registration must be received by September 18.

TOTAL AMOUNT SENT WITH REGISTRATION: \$ _____

Please make checks out to PNW/ASI. Sorry, we cannot accept credit cards.

Registration information:

Name: _____

Address: _____

City, State/Zip or Postal Code/Province, Country:

Phone: _____ Cell Phone: _____

E-mail address: _____

Membership in: ASI ISC None

We will include your first and last name on your name tag, plus the city where you're from, unless you request differently here:

Will you be going on the Ice Age Tour on Friday? Yes No

Can you provide a vehicle? Yes No If yes, how many passengers can you accommodate? _____

Saturday lunch is provided. Vegetarian and non-vegetarian options will be available.

Will you be joining us for dinner? (Dinners are not included in your registration fee.)
On Friday? Yes No On Saturday? Yes No

Send this registration form and your check to:

Sheila Ryan
1653 SE Marion Street
Portland, OR 97202

Cancellation policy: Cancellations before September 18 receive a 75% refund. Refunds will not be given after September 18.

